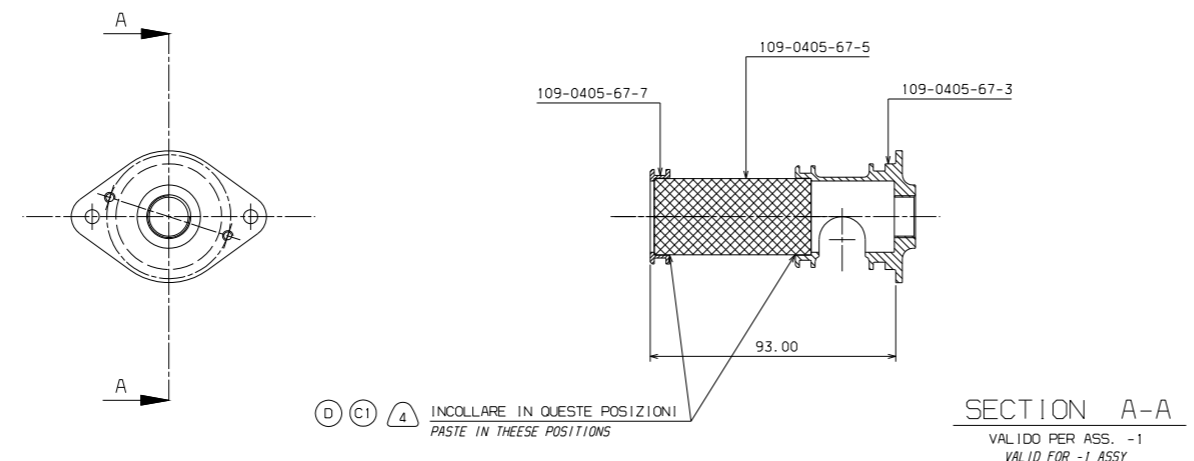


Supplier Name / partner Name <i>Nome del Fornitore / Partner</i>	Supplier RFVA No <i>N°RFVA Fornitore</i>	Date / Data
AVIOTECNICA	AVT_2018_043	27/09/2018
Leonardo – Helicopters Plant <i>Stabilimento Leonardo – Elicotteri</i>	LH RFVA No <i>N°RFVA LH</i>	Date / Data
Vergiate	A1/18/008	01/10/2018
Product Line <i>Linea di Prodotto</i>	109-0405-67-5 ¹¹ <i>Roberto Bozzi</i>	
STA/AWPS/.. Specification No <i>Specifica STA/AWPS/..</i>	Paragraph <i>Paragrafo</i>	
STA100-80-98 Rev. D	4.1.5.1	
Reason of Request for Variation Approval¹ <i>Motivazione della Richiesta di Approvazione Variante</i>	Paragraph <i>Paragrafo</i>	
<p>The internal braze joint quality inspection on PN.109-0405-67-5¹¹, brazed wired net for oil filter assy, can not be evaluated per STA100-80-98 para 4.1.5.1, then only the external quality inspection will be done. Drawing attached.</p>		
Issuing Function <i>Ente Originatore</i>	Maurizio Napolitano Production Engineering	
Reply of the Engineering Laboratory <i>Risposta del Laboratorio di Engineering</i>		
Approved – Non Critical Part The quality verification on samples brazed in accordance with STA100-80-98 gave positive acceptance.		
Scope <i>Validità applicativa</i>		
Approval <i>Approvazione</i>	<input checked="" type="checkbox"/> Yes / si <input type="checkbox"/> Partial approval / Approvazione parziale <input type="checkbox"/> No / no	Date <i>Data</i> 11/1/19
D&D function <i>Area Tecnologica</i>	Turri Alberto <i>[Signature]</i>	Pesetti Mariella <i>[Signature]</i>
Chief Project Engineer <i>CPE</i>	<i>[Signature]</i> Bozzi Roberto	
Engineering Responsible <i>Responsabile Engineering</i>	N.A.	

¹ Specify all the paragraphs involved in detail / *Specificare tutti i paragrafi interessati in modo dettagliato*
 Remark: This document shall be written in English or may be bilingual with English version

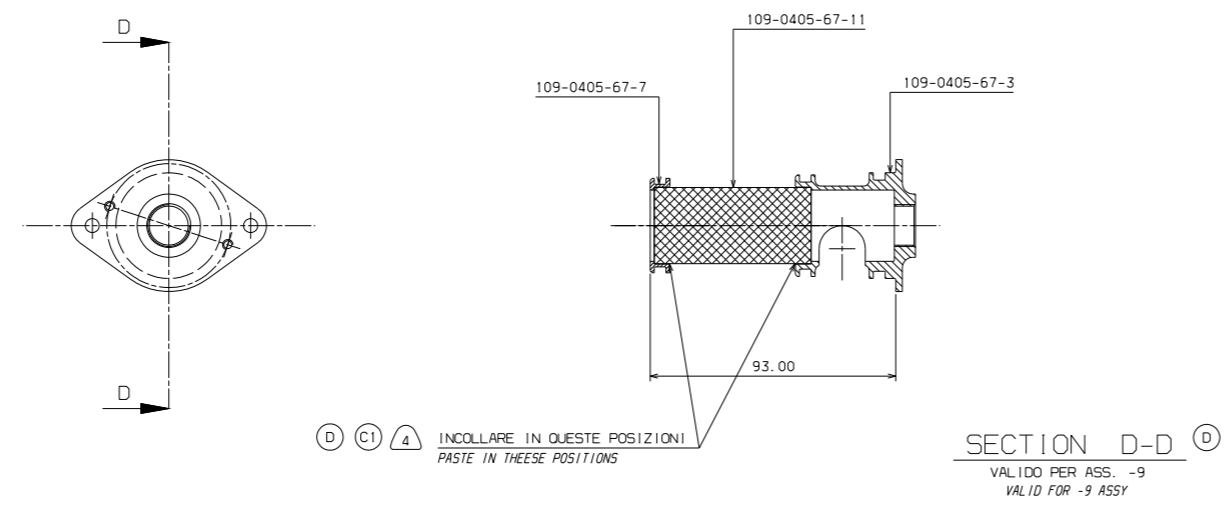
COPIA CONFORME A ORIGINALE.
PER DATA E FIRME AUTOGRAFE VEDERE S/M ULTIMA REV.
COPY CONFORM TO ORIGINAL.
SEE S/M LAST REV. FOR DATE AND OWN HAND SIGNATURES.

RECORD OF DRAWING CHANGES			
ISS	SM NO.	DRAWN	ISS DATE
A	109-1682	TAGLIAFERRI	14/09/1971
B	109-2693	CASTELLI	26/09/1974
C1	109-3630	GERMANI	30/09/1975
C2	109-3631	GERMANI	25/11/2003
D	109-41555	AZZALIN	/01/2004



INCOLLARE IN QUESTE POSIZIONI
PASTE IN THESE POSITIONS

- (-1) FILTER ASSY
- (-3) PLUG
- (-5) WIRE NET
- (-7) TERMINAL



INCOLLARE IN QUESTE POSIZIONI
PASTE IN THESE POSITIONS

- (-9) FILTER ASSY
SIMILE AL -1 ECCETTO PER QUANTO INDICATO NELLA SEZIONE D-D E "DBT".
SAME OF -1 EXCEPT WHERE OTHERWISE INDICATED IN SECTION D-D AND "DBT".
- (-3) PLUG
- (-11) WIRE NET
SIMILE AL -5 ECCETTO PER: VEDI "DBT".
SAME OF -5 EXCEPT FOR: SEE "DBT".
- (-7) TERMINAL

ITALIANO	ENGLISH
ANTER/PART	FLD
BL	BL
DETTAGLIO/DETT	DETAIL
FUOLIO	SHEET
FORI	HOLE
LA	LA
PARTICOLARE	ITEM
POSIZIONI/POSIZ	POSNS
POSTI/POSTI	PLACES
POSTI	PLACES
REALE	TRUE
RICHIEDI/RICHIED	REQ'D
RIF	REF
SCALA	SCALE
SECONDO/SECON	TAU
SEZIONE/SECON	SECTION
STA	STA
SWASARE	CSK
TIP	TYP
VISTA	VIEW
X PEZZI	X OFF
ZONA	AREA
CONST	CONST
SM	CH
PROF ILO	PROF ILE
TRACCIA	TRACE

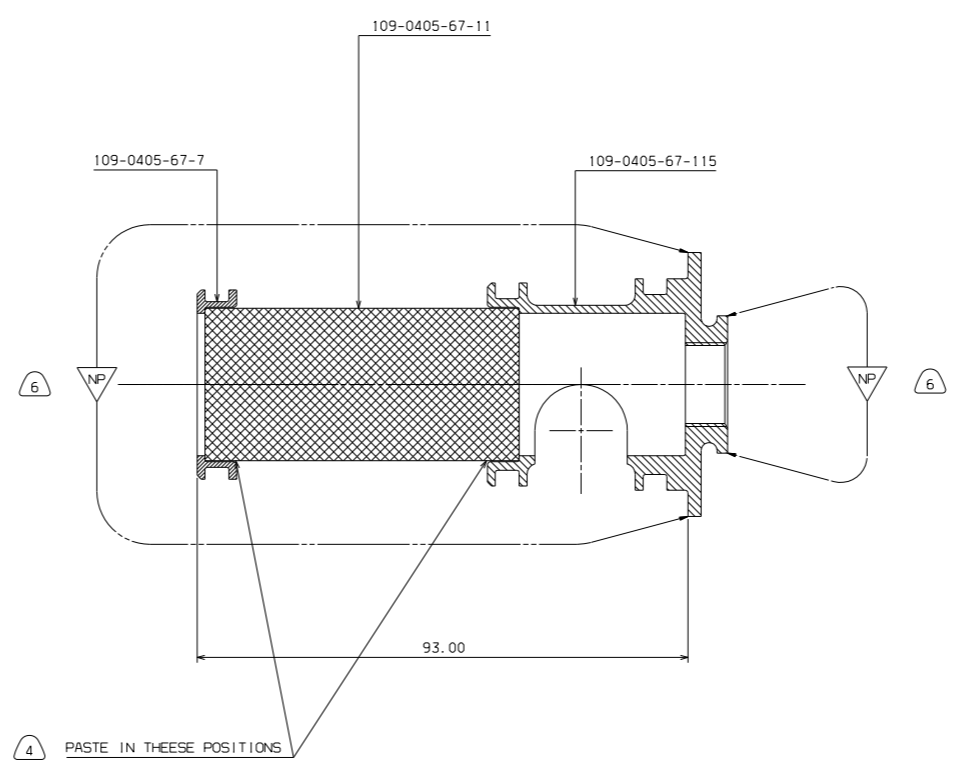
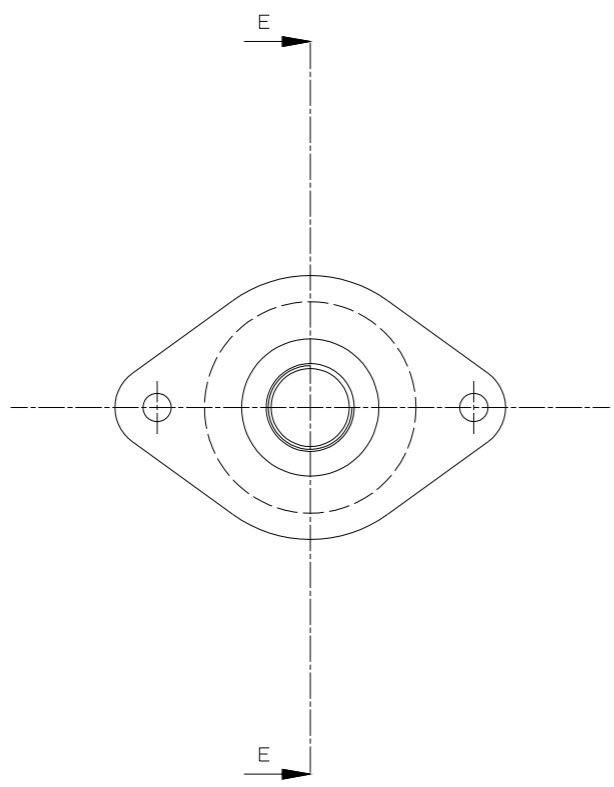
COPY OF AN ISSUED DRAWING

<p>AGUSTA CASCINA COSTA DI SAMARATE (VA) - ITALY - CAGE CODE A0126</p>		FOR PART LIST AND NOTES SEE D.B.T.			
		<p>MM 0 10 20 30 40 50 60 70 80 90 100</p>			
SCALE VALID FOR MASTER DRG ONLY	1:1	DIMENSIONS AND GENERAL TOLERANCES ARE IN MM UNLESS OTHERWISE SPECIFIED	APPROVALS	DATE	<p>THIS DOCUMENT CONTAINS CONFIDENTIAL INFORMATION AND IT IS SUPPLIED ON THE EXPRESS CONDITION THAT IT MAY NOT BE DISCLOSED, REPRODUCED IN WHOLE OR IN PART, OR USED FOR MANUFACTURE FOR ANYONE OTHER THAN AGUSTA WITHOUT ITS WRITTEN CONSENT.</p>
CATIA DRAWING		UNLESS OTHERWISE SPECIFIED THE FOLLOWING STDs APPLY: NTABSSA FINISH CODES 100-05-044 FINISH SPEC. NTABSSA CLASSIFIC. OF PARTS NTA010R GENERAL PROCEDURES NTA013R TOLERANCES GEOMETRIC NTA014R DRAWING RIVETING NTA023R PART MARKING NTA025R INTERCHANGEABILITY NTA029R GRADUATED TOLERANCES NTA069R LOCKING OF FASTENERS NTA141R DRAUGHTING PROCEDURES	<p>GERMANI 09/12/70</p> <p>CASTELLI 07/11/74</p>	<p>09/12/70</p> <p>07/11/74</p>	
- A109 -					TITLE OIL FILTER ASSY M.G.B.
RELIABILITY & MAINTAINABILITY ACP	SIGNATURE DATE				FIRST ANGLE PROJECTION
			LOVERA 14/12/70		DRG. N° 109-0405-67 SHT 01 OF 04
					ISS. D

COPIA CONFORME A ORIGINALE.
 PER DATA E FIRME AUTOGRAFE VEDERE S/M ULTIMA REV.
 COPY CONFORM TO ORIGINAL.
 SEE S/M LAST REV. FOR DATE AND OWN HAND SIGNATURES.

RECORD OF DRAWING CHANGES			
ISS	SM NO.	DRAWN	ISS DATE
D	109-41555	AZZALIN	/01/2004

ITALIANO	ENGLISH
ANTER/PART	FLD
BL	BL
DETTAGLIO/DETT	DETAIL
FUOLIO	SHEET
FORI	HOLE
LA	ML
PARTICOLARE	ITEM
POSIZIONE/POSIZ	POSNS
POSIZIONE/POSIZ	APT
POSTI	PLACES
REALE	TRUE
RICHIEDUTO/RICH	REQ'D
RIF.	REF
SCALA	SCALE
SECONDO/SEC	1AW
SEZIONE/SEC	SECTION
STA	STA
SVASARE	CSK
TIP	TYP
VISTA	VIEW
X PEZZI	X OFF
ZONA	AREA
CONST	CONST
SM	CH
PROFILLO	PROFILE
TRACCIA	TRACE



SECTION E-E
 VALID FOR -113 ASSY

- (-113) FILTER ASSY
- (B) (-11) WIRE NET
- (-7) TERMINAL
- (-115) PLUG

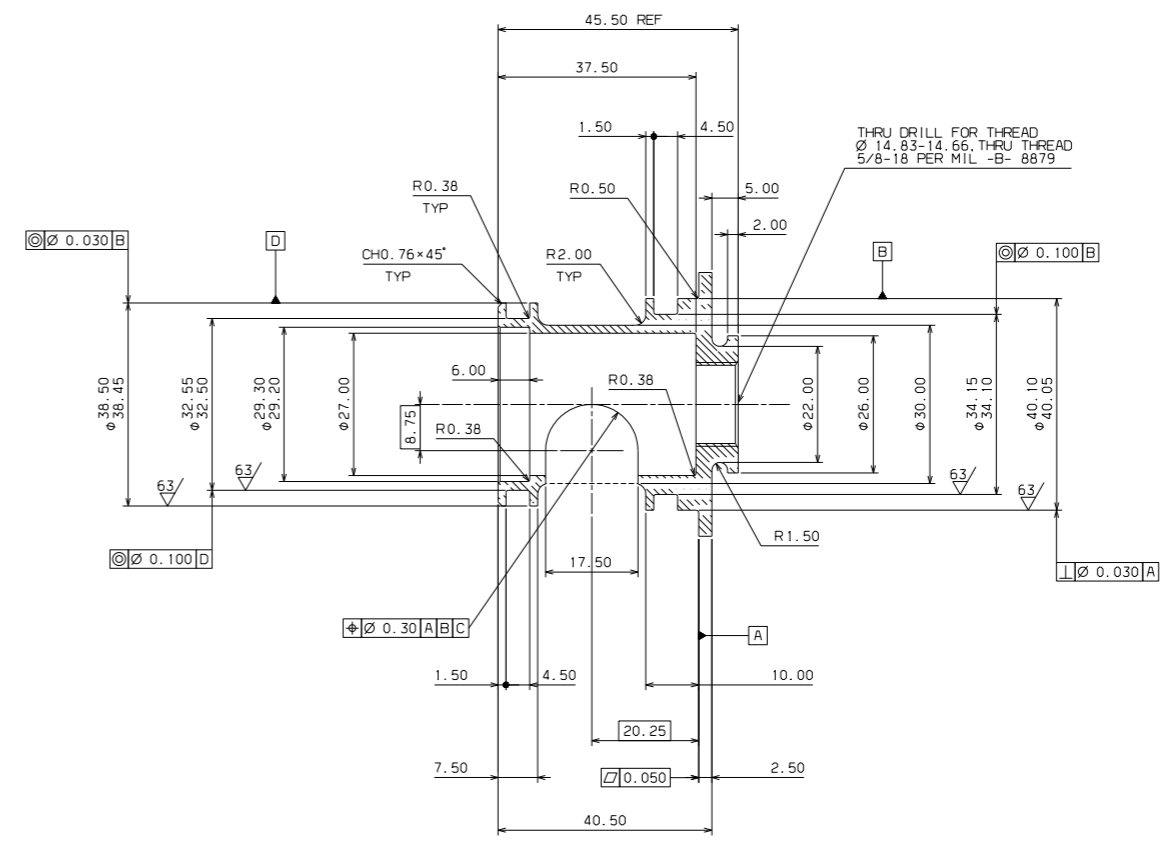
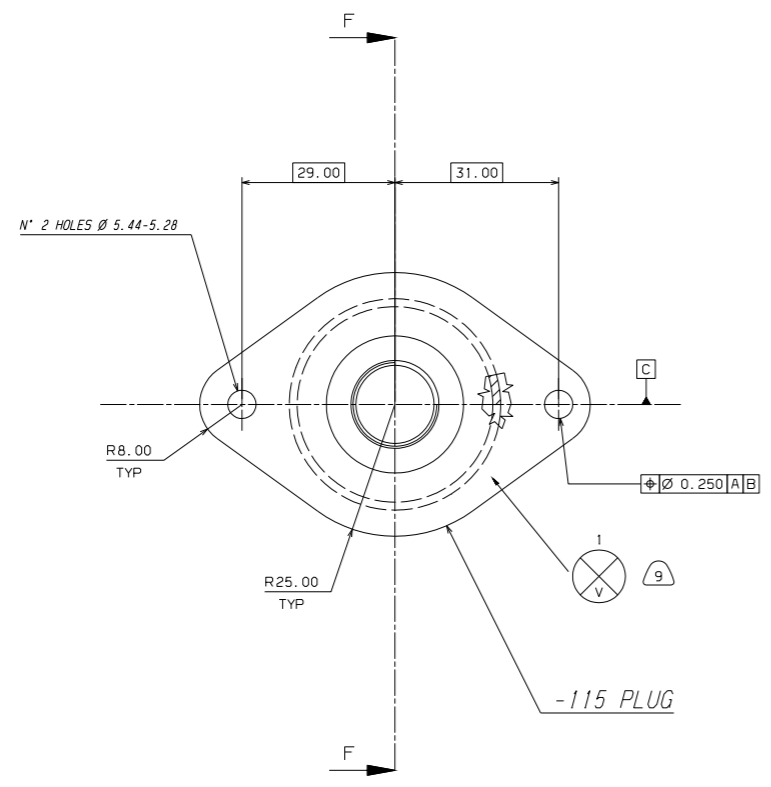
COPY OF AN ISSUED DRAWING

AGUSTA CASCINA COSTA DI SAMARATE (VA) - ITALY - CAGE CODE A0126		APPROVALS AZZALIN /01/2004 SOLOMITA R. /01/2004 GASPARI G. /01/2004		FOR PART LIST AND NOTES SEE D.B.T. MM 0 10 20 30 40 50 60 70 80 90 100 THIS DOCUMENT CONTAINS CONFIDENTIAL INFORMATION AND IT IS SUPPLIED ON THE EXPRESS CONDITION THAT IT MAY NOT BE DISCLOSED, REPRODUCED IN WHOLE OR IN PART, OR USED FOR MANUFACTURE FOR ANYONE OTHER THAN AGUSTA WITHOUT ITS WRITTEN CONSENT.
		SCALE VALID FOR MASTER DRG ONLY: 2:1 DIMENSIONS AND GENERAL TOLERANCES ARE IN MM UNLESS OTHERWISE SPECIFIED UNLESS OTHERWISE SPECIFIED THE FOLLOWING STDS APPLY: NTABSSA FINISH CODES 100-05-044 FINISH SPEC. NTABSSA CLASSIFIC. OF PARTS NTAD10R GENERAL PROCEDURES NTAD13R TOLERANCES GEOMETRIC NTAD14R GRINDING RIVETING NTAD23R PART MARKING NTAD25R INTERCHANGEABILITY NTAD29R GRADUATED TOLERANCES NTAD39R LOCKING OF FASTENERS NTAD41R DRAGHTING PROCEDURES NTAD22R SURFACE FINISH		
- A109 -		RELIABILITY DATE SIGNATURE BIOTTI G. /01/2004		FIRST ANGLE DRG. N° 109-0405-67 SHT 03
ACP SIGNATURE DATE BIOTTI G. /01/2004		ARR. M. /01/2004		PROJECTION D

COPIA CONFORME A ORIGINALE.
PER DATA E FIRME AUTOGRAFE VEDERE S/M ULTIMA REV.
COPY CONFORM TO ORIGINAL.
SEE S/M LAST REV. FOR DATE AND OWN HAND SIGNATURES.

RECORD OF DRAWING CHANGES			
ISS	SM NO.	DRAWN	ISS DATE
D	109-41555	AZZALIN	/01/2004

ITALIANO	ENGLISH
ANTER/PART	FLD
BL	BL
DETTAGLIO/DETAIL	DETAIL
FUOGLIO	SHEET
FORI	HOLES
LA	ML
PARTICOLARE	ITEM
POSIZIONI/POSIZ	POSNS
POSIZIONE/POSIZ	AFIT
POSTI	PLACES
REALE	TRUE
RICHIEDI/RIQD	REQ'D
RIF.	REF
SCALA	SCALE
SECONDO/SEC	1AW
SEZIONE/SEC	SECTION
STA	STA
SWASARE	CSK
TIP	TYP
VISTA	VIEW
X PEZZI	X OFF
ZONA	AREA
CONST	CONST
SM	CH
PROF ILO	PROF ILE
TRACCIA	TRACE



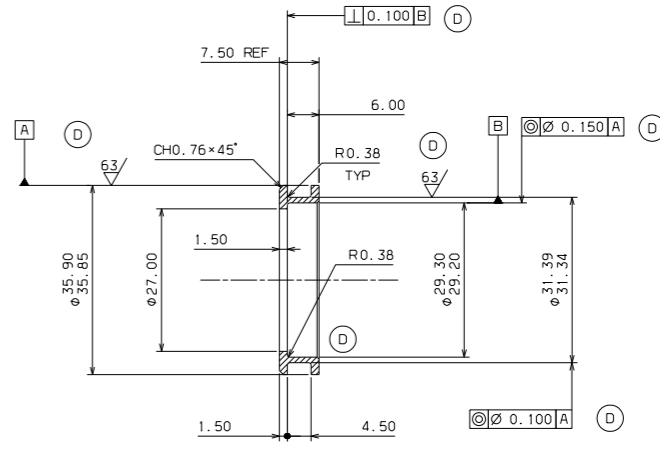
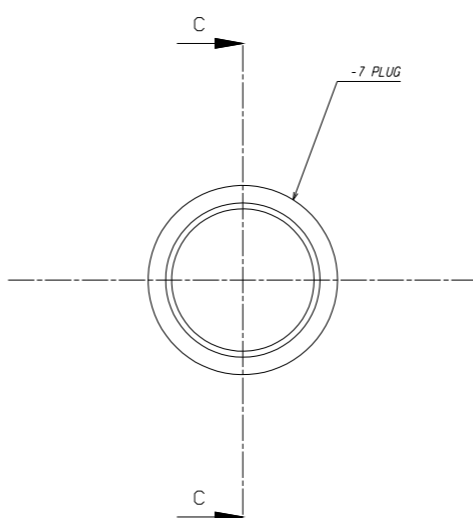
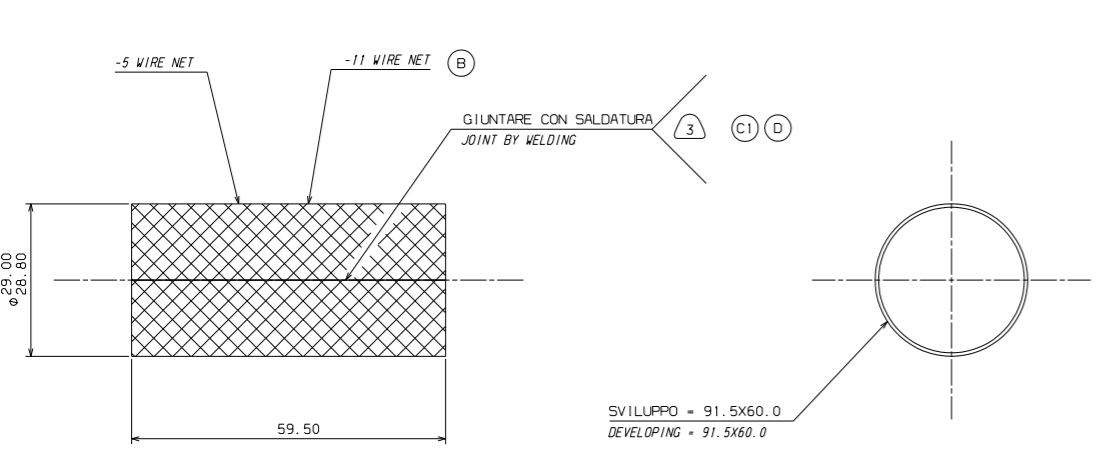
SECTION F-F

COPY OF AN ISSUED DRAWING

<p>AGUSTA CASCINA COSTA DI SAMARATE (VA) - ITALY - CAGE CODE A0126</p>		FOR PART LIST AND NOTES SEE D.B.T.							
		<p>MM 0 10 20 30 40 50 60 70 80 90 100</p>							
SCALE VALID FOR MASTER DRG ONLY	2:1	DIMENSIONS AND GENERAL TOLERANCES ARE IN MM UNLESS OTHERWISE SPECIFIED	APPROVALS						
CATIA DRAWING		UNLESS OTHERWISE SPECIFIED THE FOLLOWING STDS APPLY: NTABSSA FINISH CODES 100-05-044 FINISH SPEC. NTABSSA CLASSIFIC. OF PARTS NTA010R GENERAL PROCEDURES NTA013R TOLERANCES GEOMETRIC NTA014R DRAWING RIVETING NTA023R PART MARKING NTA025R INTERCHANGEABILITY NTA029R GRADUATED TOLERANCES NTA069R LOCKING OF FASTENERS NTA141R DRAUGHTING PROCEDURES	<table border="1"> <tr><td>DATE</td><td>01/2004</td></tr> <tr><td>DRG ENGINEER</td><td>GASPARINI G.</td></tr> <tr><td>DRG CHECKER</td><td>ARRA M.</td></tr> </table>	DATE	01/2004	DRG ENGINEER	GASPARINI G.	DRG CHECKER	ARRA M.
DATE	01/2004								
DRG ENGINEER	GASPARINI G.								
DRG CHECKER	ARRA M.								
- A109 -		TITLE	OIL FILTER ASSY M.G.B.						
RELIABILITY	SIGNATURE	FIRST ANGLE	DRG. N°						
DATE	BIOTTI G. /01/2004	PROJECTION	109-0405-67						
ACP	DATE		SHT 04						
			ISS. D						

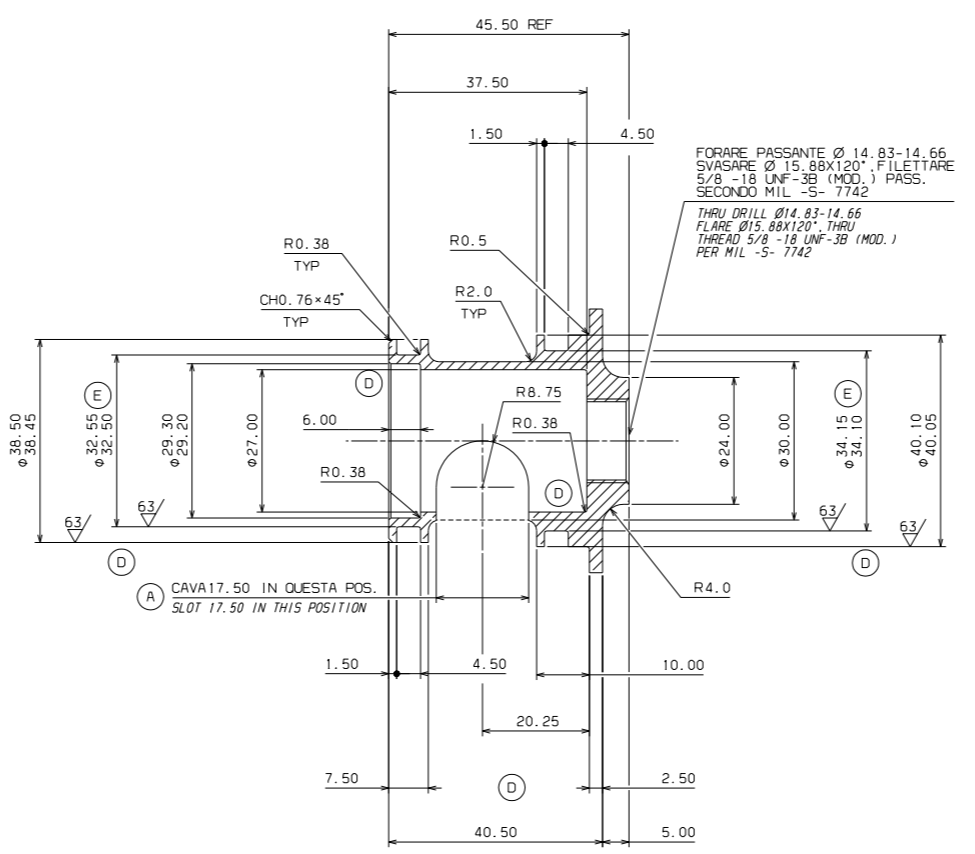
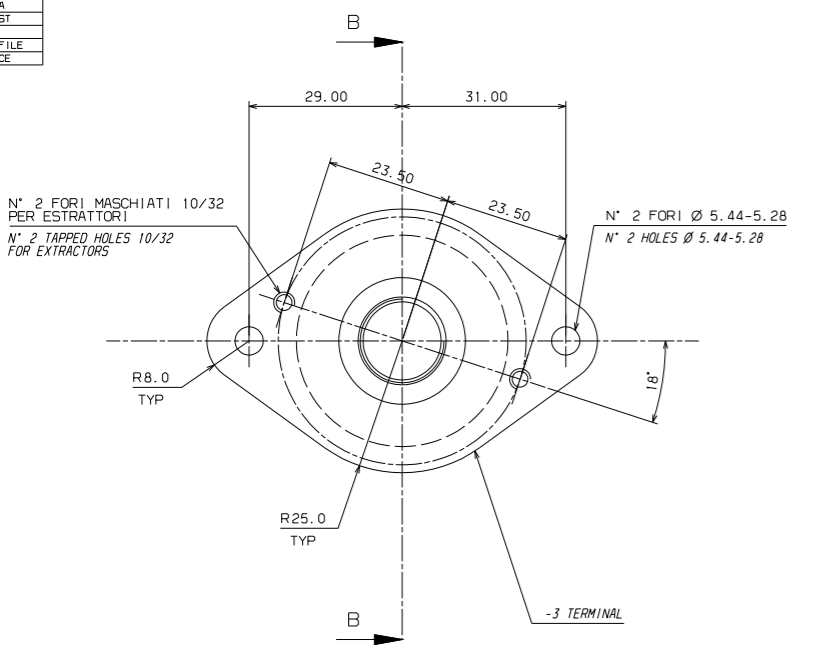
COPIA CONFORME A ORIGINALE.
PER DATA E FIRME AUTOGRAFE VEDERE S/M ULTIMA REV.
COPY CONFORM TO ORIGINAL.
SEE S/M LAST REV. FOR DATE AND OWN HAND SIGNATURES.

RECORD OF DRAWING CHANGES			
ISS	SM NO.	DRAWN	ISS DATE
A	109-1682	TAGLIAFERRI	14/09/1971
B	109-2683	CASTELLI	26/09/1974
C1	109-3630	GASPERI	30/09/1975
C2	109-3631	GASPERI	30/09/1975
D	109-41555	AZZALIN	/01/2004
E	109-42786	AZZALIN	/04/2004



SECTION C-C

ITALIANO	ENGLISH
ANTER/ANT	FLD
BL	BL
DETTAGLIO/DET	DETAIL
FOGLIO	SHEET
FORI	HOLES
LA	ML
PARTICOLARE	ITEM
POSIZIONI/POSIZ	POISNS
POSIZIONE/POST	PLACES
POSTI	PLACES
REALE	TRUE
RICHIEDI/RICHIED	REQ'D
RIF	REF
SCALA	SCALE
SECONDO/SEC	TAW
SEZIONE/SEC	SECTION
STA	STA
SVASARE	CSK
TIP	TYP
VISTA	VIEW
X PEZZI	X OFF
ZONA	AREA
COST	CONST
SM	CH
PROF LO	PROF ILE
TRACCIA	TRACE



SECTION B-B

<p>AGUSTA CASCINA COSTA DI SAMARATE (VA) - ITALY - CAGE CODE A0126</p>		FOR PART LIST AND NOTES SEE D.B.T.	
		<p>MM 0 10 20 30 40 50 60 70 80 90 100</p>	
SCALE VALID FOR MASTER DRG ONLY	2:1	DIMENSIONS AND GENERAL TOLERANCES ARE IN MM UNLESS OTHERWISE SPECIFIED	APPROVALS
CATIA DRAWING		UNLESS OTHERWISE SPECIFIED THE FOLLOWING STDS APPLY: NTABSSA FINISH CODES 100-05-044 FINISH SPEC. NTABSSA CLASSIFIC. OF PARTS NTA010R GENERAL PROCEDURES NTA013R TOLERANCES GEOMETRIC NTA014R DRAWING RIVETING NTA023R PART MARKING NTA029R INTERCHANGEABILITY NTA029R GRADUATED TOLERANCES NTA030R LOCKING OF FASTENERS NTA040R GRADING PROCEDURES	DATE 09/12/70 07/11/74
- A109 -			TITLE OIL FILTER ASSY M.G.B.
RELIABILITY DATE	SIGNATURE	NTA022R SURFACE FINISH	FIRST ANGLE DRG. N° 109-0405-67
ACP	SIGNATURE DATE		SHT 02 ISS. E

COPY OF AN ISSUED DRAWING

AGUSTAWESTLAND

NUMERO DISEGNO / DRAWING NUMBER
109-0405-67

TITOLO / TITLE
OIL FILTER ASSY, M.G.B.

ESP. / ISSUE
E

DATA / DATE
10/11/2004

DOC. NUMBER
SM 109-42786

STATO / STATUS
D

SPECIFICA FINITURA / FINISH SPEC.
109-05-03

CODICE FINITURA / FINISH CODE
NTA455A

PAGINA / PAGE
001

UNCLASSIFIED

----- MODIFICHE / HISTORY -----

NOTE REVISIONE / REVISION NOTES				I/N
A	SM 109-1682	14/09/1971	TAGLIAFERRI	I
B	SM 109-2693	26/09/1974	CASTELLI	I
C1	SM 109-3630	30/09/1975	GASPERI	I
C2	SM 109-3631	30/09/1975	GASPERI	I
D	SM 109-41555	15/01/2004	AZZALIN UMBERTO	I
E	SM109-42786	17/04/2004	AZZALIN UMBERTO	I

----- STATO ESP. FOGLI DISEGNO / DRAWING SHEET ISSUE STATUS -----

IL GRAFICO E' COMPOSTO DA N. 4 MODELLI CATIA:
-000 D 0001 TRN P DW
-000 E 0002 TRN P DW
-000 D 0003 TRN P DW
-000 D 0004 TRN P DW

THE DRAWING IS COMPOSED OF N. 4 CATIA MODELS:
-000 D 0001 TRN P DW
-000 E 0002 TRN P DW
-000 D 0003 TRN P DW
-000 D 0004 TRN P DW

----- MATERIALI / MATERIAL -----

P/N FINITO PART NUMBER	COD. CODE	COND	TIPO TYPE	DENOMINAZIONE DESCRIPTION	SPECIFICA SPECIFICATION	T UM THICK.	SPESS. WDTH/DIA	LARG/DIA LENGTH	LUNGH. LENGTH	UM-RESIST.	FIN.SUP P.T.
109-0405-67-1	/COFI			CODICE FIN. ASSY E/O PESO		*					
								PESO / WEIGHT =	0.07000 KG	+/- 0%	(P)
109-0405-67-9	/COFI			CODICE FIN. ASSY E/O PESO		*					
								PESO / WEIGHT =	0.07000 KG	+/- 0%	(P)
109-0405-67-113	/COFI			CODICE FIN. ASSY E/O PESO		*					XPD/1
								PESO / WEIGHT =	0.07000 KG	+/- 0%	(P)
109-0405-67-3	/0835		TO	AL-ALY, 2024, DRAWN	QQ-A-225/6	* MM	78.0	53.0		T4	A
								PESO / WEIGHT =	0.04500 KG	+/- 0%	(P)
109-0405-67-5	/0001			REWORKED		*					
				FILTRO INOX W/M GAUGE 23	16X16MGL DIA 0,57						
109-0405-67-7	/0835		TO	AL-ALY, 2024, DRAWN	QQ-A-225/6	* MM	40.0	15.0		T4	A
								PESO / WEIGHT =	0.02000 KG	+/- 0%	(P)
								PESO / WEIGHT =	0.00500 KG	+/- 0%	(P)

AGUSTAWESTLAND

NUMERO DISEGNO / DRAWING NUMBER
109-0405-67

TITOLO / TITLE
OIL FILTER ASSY, M.G.B.

ESP. / ISSUE
E

DATA / DATE
10/11/2004

DOC. NUMBER STATO / STATUS
SM 109-42786 D

SPECIFICA FINITURA / FINISH SPEC.
109-05-03

CODICE FINITURA / FINISH CODE
NTA455A

PAGINA / PAGE
002

UNCLASSIFIED

P/N FINITO		COD.	COND	TIPO	DENOMINAZIONE	MATERIALI / MATERIAL		T	UM	SPESS.	LARG/DIA	LUNGH.	UM-RESIST.	FIN.SUP
PART NUMBER		CODE		TYPE	DESCRIPTION	SPECIFICA	SPECIFICATION			THICK.	WDTH/DIA	LENGTH		P.T.
109-0405-67-11	/1366				CRES,301	MIL-S-5059FIN2B		*						
					FORI DIA 1,02 SP 0,65 324	FORI X POLLICE QU				PESO / WEIGHT =		0.02000	KG	+/- 0% (P)
109-0405-67-115	/0427			TO	AL-ALY,2024	AMS-QQ-A-225/6		*		MM	78.0	53.0		T351 A
										PESO / WEIGHT =		0.04500	KG	+/- 0% (P)

----- PARTS LIST -----

REV	* QUANTITA' PER ASSIEME / QUANTITY PER ASSY *	PART NUMBER	DENOMINAZIONE/DESCRIPTION	NOTE	I	CRIT	S	A	ZONA
	113 9 1				C	CAT.	E	D	ZONE
					Y		R		
A			-1 OIL FILTER ASSY	3	4	C	N	A	
B			-9 OIL FILTER ASSY	3	4	C	N	A	
D			-113 OIL FILTER ASSY	3	4	S	N	A	
				6	9				
	CR CR CR		ADHESIVE, TY I CL 3	6				D	
			MMM-A-132 (/7432)						
B	1 1	109-0405-67-11	WIRE NET			C	N	D	
D	1	109-0405-67-115	PLUG			S	N	D	
E	1 1	109-0405-67-3	PLUG			C	N	D	
	1 1	109-0405-67-5	WIRE NET			C	N	D	
	1 1 1	109-0405-67-7	TERMINAL			C	N	D	

----- ASSIEMI SUCCESSIVI / NEXT ASSEMBLY -----

DASH ASS. SUCC. / NEXT ASSY DRG QTA / QTY

----- NOTE / NOTES -----

1 TOGLIERE GLI SPIGOLI CON SMUSSO 0,15-0,40 X 45 GRADI OPPURE RACCORDARE CON RAGGIO 0,15-0,40 SE NON DIVERSAMENTE INDICATO.

REMOVE CORNERS, CHAMFERING 0,15-0,40 X 45 DEGREE OR FILLET RADIUS 0,15-

AGUSTAWESTLAND

NUMERO DISEGNO / DRAWING NUMBER
109-0405-67

TITOLO / TITLE
OIL FILTER ASSY, M.G.B.

ESP. / ISSUE
E

DATA / DATE
10/11/2004

DOC. NUMBER STATO / STATUS
SM 109-42786 D

SPECIFICA FINITURA / FINISH SPEC.
109-05-03

CODICE FINITURA / FINISH CODE
NTA455A

PAGINA / PAGE
003

UNCLASSIFIED

----- NOTE / NOTES -----

0,40, IF UNLESS OTHERWISE STATED.

- 2 I DIA. DEL PARTICOLARE -3 (TAPPO) DEVONO ESSERE CONCENTRICI CON I DIA. DEL PARTICOLARE -7 (TERMINALE) ENTRAMBI MONTATI SULL'ASSIEME ENTRO 0,20 L.T.C. VALIDO PER -1 E -9.
RIF. NOTA REV. D.

THE DIA. OF THE DETAIL -3 (PLUG) SHALL BE CONCENTRICS WITH THE DIA. OF THE DETAIL -7 (TERMINAL) BOTH ASSEMBLED IN THE ASSY IN 0.20 L.T.C. VALID FOR -1 AND -9.
REF. NOTE REV. D.

- 3D SALDOBRASTURA ALL'ARGENTO SECONDO STA 100-80-98.
REF. NOTA REV. C1 E D.

SILVER BRAZING PER STA 100-80-98.
REF. NOTE REV. C1 AND D.

- 4D PREPARARE LE PARTI DA INCOLLARE SECONDO STA 100-83-52, USARE PRIMER EA934B SECONDO STA 100-83-98 ED INCOLLARE CON ADESIVO EA934NA SECONDO STA 110A0018
RIF. NOTA REV. C1 E D.

PREPARE THE PARTS FOR PASTING PER STA 100-83-52, USE PRIMER EA934B PER STA 100-83-98 AND PASTE WITH ADHESIVE EA934NA ACCORDING TO STA 110A0018.
REF. NOTE REV. C1 AND D.

- 5 NOTA ANNULLATA, NON TROVA RISCONTRO NELLA REL. 109-01-12.
RIF. NOTA REV. D.

DELETED NOTE, IT DOESN'T FIND VERIFICATION IN REL. 109-01-12.
REF. NOTE REV. D.

- 6D OMETTERE LA VERNICIATURA DELLE SUPERFICI INDICATE.
VALIDO PER -113.
RIF. NOTA REV. D

OMIT PAINTING WHERE SHOWN.
VALID FOR -113.
REF. NOTE REV. D

- 7 ANODIZZAZIONE COMPLETA DEL PEZZO SECONDO STA 100-80-01.
RIF. NOTA REV. D.

AGUSTAWESTLAND

NUMERO DISEGNO / DRAWING NUMBER
109-0405-67

TITOLO / TITLE
OIL FILTER ASSY, M.G.B.

ESP. / ISSUE
E

DATA / DATE
10/11/2004

DOC. NUMBER STATO / STATUS
SM 109-42786 D

SPECIFICA FINITURA / FINISH SPEC.
109-05-03

CODICE FINITURA / FINISH CODE
NTA455A

PAGINA / PAGE
004

UNCLASSIFIED

----- NOTE / NOTES -----

COMPLETE ANODIZING OF THE PART PER STA 100-80-01.
REF. NOTE REV. D.

8 ISPEZIONE FLUORESCENTE PENETRANTE SECONDO STA 110X0008.
RIF. NOTA REV. D.

FLUORESCENT PENETRANT INSPECTION PER STA 110X0008.
REF. NOTE REV. D.

9D MARCARE SECONDO NTA023R E STA 100-80-50, DOVE INDICATO.
VALIDO PER -113.
RIF. NOTA REV. D.

MARK PER NTA023R AND STA 100-80-50, WHERE INDICATED.
VALID FOR -113.
REF. NOTE REV. D.

10 VERNICIARE LE SUPERFICI ESTERNE COME SEGUE:
- UNO (1) STRATO "XPD" SECONDO MIL-PRF-23377 TIPO I CLASSE C IN ACCORDO CON
STA 100-84-51.
VALIDO PER -113.
RIF. NOTA REV. D

PAINT THE EXTERNAL SURFACES AS FOLLOW:
- ONE (1) LAYER "XPD" PER MIL-PRF-23377 TYPE I CLASS C ACCORDING TO STA
100-84-51.
VALID FOR -113.
REF. NOTE REV. D

AGUSTAWESTLAND

NUMERO DISEGNO / DRAWING NUMBER
109-0405-67

TITOLO / TITLE
OIL FILTER ASSY, M.G.B.

ESP. / ISSUE
E

DATA / DATE
10/11/2004

DOC. NUMBER STATO / STATUS
SM 109-42786 D

SPECIFICA FINITURA / FINISH SPEC.
109-05-03

CODICE FINITURA / FINISH CODE
NTA455A

PAGINA / PAGE
005

UNCLASSIFIED

----- SITUAZIONE P/N SUPERATI/EQUIVALENTI -----
P/N COMPONENTE P/N SUPERANTE DOCUMENTO

LA TABELLA NON CONTIENE NESSUN P/N SUPERATO E/O EQUIVALENTE

----- QUESTA TABELLA E' COMPOSTA DI 005 PAGINE / THIS PARTS LIST IS COMPOSED OF 005 PAGES -----

